

Right hemicolectomy

Information for patients from the Association of Coloproctology of Great Britain and Ireland (ACPGBI)

A right hemicolectomy operation removes the right-hand portion of the colon (approximately half the colon). This will include the caecum, ascending colon, and part of the transverse colon. It is necessary to remove this much because of the way the blood supply supports the colon, rather than because the disease has spread.

What is the colon?

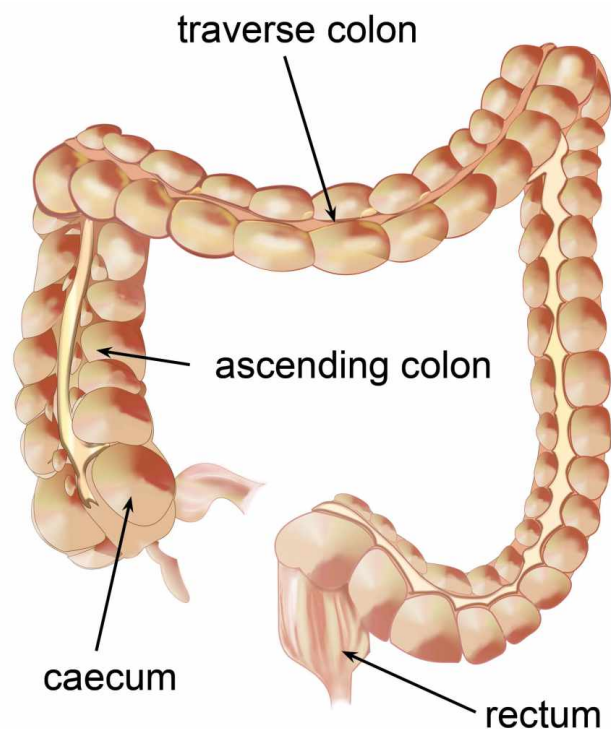
The colon refers to the large intestine or bowel. It forms the lowest part of the digestive system after the small bowel, and it ends with the rectum and the anus.

What happens during the operation?

Your operation will be done by either an 'open' operation, where one long incision (cut) will be made in your abdomen (tummy), or by laparoscopic (keyhole) surgery using a few small incisions.

After removing the portion of colon, the surgeon will join the two healthy ends together, using either a series of sutures (stitches) or staples. This is called an anastomosis.

Whether you have open or laparoscopic surgery will depend on many things. Each case has to be looked at individually, so you will need to discuss your options with your surgeon and find out which way of operating is best for you.



The colon

What happens during a laparoscopic (keyhole) operation?

Your surgeon will make three or four small (1cm) cuts in your abdomen. They will put a telescope camera into one of these small cuts to show an enlarged image (on a television screen) of the organs in your abdomen. The other cuts allow your surgeon to use special operating instruments.

Your surgeon will make one of the cuts longer (8 to 10cm) so they can remove the portion of your bowel that they have operated on. Sometimes it is not possible or safe to finish the operation by laparoscopic surgery. If this happens your surgeon will change to an 'open' operation and need to make a larger incision.

Will I need any special preparation before my surgery?

You will have investigations and tests to prepare you for your operation. These are to confirm your diagnosis, to see how far the disease has spread, and to assess how fit and well you are for the proposed treatment.

Will I need to have a stoma (bowel bag)?

It is very unlikely that you will need a stoma. However, sometimes it is not possible to join the bowel back together again, so the end of the bowel is brought out onto the abdomen (tummy) to form an opening outside the body, known as a stoma. A stoma bag is then fitted around this opening to collect your bowel contents.

The stoma may be permanent or temporary.

If you need a stoma or it is possible that you may need a stoma, you will be seen by a stoma nurse. These specialist nurses are skilled in caring for patients who have a stoma and will be able to answer any questions you may have.

Are there complications with this operation?

Risks of having this operation are small and much less likely to affect you than the risk of doing nothing. However this is a major operation and some people (less than one in 20) do not survive the surgery.

There are sometimes complications. These may include:

- bleeding
- infection
- a leak from the anastomosis (the join where the bowel is connected back together)
- injury to other organs within the abdomen (for example, the small intestine, ureter, or bladder)
- deep vein thrombosis (blood clots in the veins in the legs), or
- pulmonary embolisms (blood clots in the lungs).

What should I expect after surgery?

Immediately after your operation (within the first 24 to 48 hours), you will need:

- oxygen through a face mask
- a drip into a vein in one of your arms to give you fluid
- a catheter (tube) in your bladder to drain away urine, and
- medication to deal with pain from the incisions; this may be given as an epidural (where the medicine is given through a fine tube in your back) or through the drip.

Later (the following day or so), you will need to:

- start eating again, starting with liquids and gradually introducing solid foods, and
- move around as soon as possible.

If you have had laparoscopic surgery, you may recover more quickly after surgery and go home sooner.

When you first start going to the toilet again, your faeces will be liquid. Sometimes it takes several weeks to get back to normal, and you may have to make changes to your diet.

How long will I need to be in hospital?

You will stay in hospital for as little time as necessary, usually between three and seven days. Your surgeon or specialist nurse will discuss with you daily achievements, which you should try to meet. This programme is called 'enhanced recovery after surgery' (ERAS).

If after you leave hospital, you have any new concerns or problems (for example severe abdominal pain, a raised temperature, or bleeding) it is important to contact your own doctor (GP) or the hospital. You will be given contact numbers when you leave hospital.

Produced with grateful acknowledgement to The Association of Coloproctology of Great Britain and Ireland (ACPGBI) (<https://www.acpgbi.org.uk/>).

This leaflet has been produced with and for patients.

Please let us know:

- If you have any accessibility needs; this includes needing a hearing loop or wanting someone to come with you to your appointment.
- If you need an interpreter.
- If you need this information in another format (such as Braille, audio, large print or Easy Read).

You can let us know this by:

- Visiting the Trust web site (<https://www.ekhuft.nhs.uk/ais>).
- Calling the number at the top of your appointment letter.
- Adding this information to the Patient Portal (<https://pp.ekhuft.nhs.uk/login>).
- Telling a member of staff at your next appointment.

Any complaints, comments, concerns or compliments, please speak to a member of your healthcare team. Or contact the Patient Advice and Liaison Service on 01227 783145 or email (ekh-tr.pals@nhs.net).

Patients should not bring large sums of money or valuables into hospital. Please note that East Kent Hospitals accepts no responsibility for the loss or damage to personal property, unless the property has been handed into Trust staff for safe-keeping.

Further patient information leaflets are available via the East Kent Hospitals' web site (<https://www.ekhuft.nhs.uk/patient-information>).

Reference number: Web 175

First published:
August 2018

Last reviewed:
December 2022

Next review date:
April 2026



Illustrations and Photographs created by the Medical Photography Department.

Copyright © East Kent Hospitals University NHS Foundation Trust.